

*** Burn Rate Comparison Chart

<< FASTEST

1. R-1 (Norma)	59. HS-7 (Hodgdon)	117. Varget (Hodgdon)
2. N310 (Vihtavuori)	60. Blue Dot (Alliant)	118. 5000 (Vectan)
3. Titewad (Hodgdon)	61. 571 (Winchester)	119. AR2208 (ADI)
4. AS- 30N (ADI)	62. N105 (Vihtavuori)	120. 4064 (IMR)
5. Nitro 100 (Accurate)	63. No. 9 (Accurate)	121. 4064 XMR (Accurate)
6. Bullseye (Alliant)	64. Enforcer (Ramshot)	122. 2520 (Accurate)
7. Solo 1000 (Accurate)	65. 4100 (Scot)	123. 4320 (IMR)
8. Red Diamond (Scot)	66. Steel (Alliant)	124. N203 (Norma)
9. AS (Vectan)	67. 2400 (Alliant)	125. N140 (Vihtavuori)
10. Red Dot (Alliant)	68. N110 (Vihtavuori)	126. N540 (Vihtavuori)
11. Promo (Alliant)	69. Lil Gun (Hodgdon)	127. 2700 (Accurate)
12. Titegroup (Hodgdon)	70. R123 (Norma)	128. Big Game (Ramshot)
13. No. 2 (Accurate)	71. H110 (Hodgdon)	129. Reloader 15 (Alliant)
14. American Select (Alliant)	72. 296 (Winchester)	130. H380 (Hodgdon)
15. AA Plus (Winchester)	73. AR2205 (ADI)	131. 760 (Winchester)
16. Clays (Hodgdon)	74. SR-4759 (IMR)	132. Brig 4351 (Scot)
17. N320 (Vihtavuori)	75. N120 (Vihtavuori)	133. H414 (Hodgdon)
18. Competition (Ramshot)	76. 4227 (IMR)	134. N150 (Vihtavuori)
19. Royal D (Scot)	77. H4227 (Hodgdon)	135. N550 (Vihtavuori)
20. WST (Winchester)	78. 5744 XMR (Accurate)	136. 4350 XMR (Accurate)
21. AP- 50N (ADI)	79. 410 (Alliant)	137. 4350 (IMR)
22. HP38 (Hodgdon)	80. N130 (Vihtavuori)	138. 7000 (Vectan)
23. AO (Vectan)	81. SP-3 (Vectan)	139. AR2209 (ADI)

24. 452AA (Winchester)	82. 680 (Winchester)	140. H4350 (Hodgdon)
25. 453 (Scot)	83. N200 (Norma)	141. N204 (Norma)
26. 231 (Winchester)	84. 1680 (Accurate)	142. Hunter (Ramshot)
27. Zip (Ramshot)	85. AR2207 (ADI)	143. Reloader 19 (Alliant)
28. 700X (IMR)	86. H4198 (Hodgdon)	144. N160 (Vihtavuori)
29. Green Dot (Alliant)	87. N133 (Vihtavuori)	145. N560 (Vihtavuori)
30. AS- 50N (ADI)	88. 4198 (IMR)	146. 4831 (IMR)
31. International Clays (Hodgdon)	89. BM1 (ADI)	147. Brig 4831 (Scot)
32. 473AA (Winchester)	90. Brig 4197 (Scot)	148. AR2213SC (ADI)
33. HS-5 (Hodgdon)	91. 2015 XMR (Accurate)	149. N205 (Norma)
34. WSL (Winchester)	92. Brig 3032 (Scot)	150. 3100 XMR (Accurate)
35. Unique (Alliant)	93. Reloader 7 (Alliant)	151. WMR (Winchester)
36. Universal Clays (Hodgdon)	94. 3031 (IMR)	152. H4831 (Hodgdon)
37. N330 (Vihtavuori)	95. Benchmark (Hodgdon)	153. MRP (Norma)
38. AP- 70N (ADI)	96. BM2 (ADI)	154. Reloader 22 (Alliant)
39. Power Pistol (Alliant)	97. N201 (Norma)	155. 785 (Winchester)
40. SR-7625 (IMR)	98. Brig 322 (Scot)	156. H450 (Hodgdon)
41. HS-6 (Hodgdon)	99. AR2219 (ADI)	157. Mag Pro (Accurate)
42. Silhouette (Ramshot)	100. H322 (Hodgdon)	158. N165 (Vihtavuori)
43. WAP (Winchester)	101. X-Terminator (Ramshot)	159. WXR (Winchester)
44. N340 (Vihtavuori)	102. 2230 (Accurate)	160. 7828 (IMR)
45. 540 (Winchester)	103. 748 (Winchester)	161. 8700 (Accurate)
46. Herco (Alliant)	104. Reloader 10X (Alliant)	162. H1000 (Hodgdon)
47. WSF (Winchester)	105. BLC-2 (Hodgdon)	163. AR2217 (ADI)

48. SR-4756 (IMR)	106. AR2206 (ADI)	164. Magnum (Ramshot)
49. AP- 100 (ADI)	107. 2460 (Accurate)	165. Reloader 25 (Alliant)
50. Solo 1250 (Accurate)	108. H335 (Hodgdon)	166. AR2225 (ADI)
51. 3N37 (Vihtavuori)	109. TAC (Ramshot)	167. Retumbo (Hodgdon)
52. 800X (IMR)	110. H4895 (Hodgdon)	168. H870 (Hodgdon)
53. No. 7 (Accurate)	111. 2495 XMR (Accurate)	169. N170 (Vihtavuori)
54. Longshot (Hodgdon)	112. AR2206H (ADI)	170. 24N41 (Vihtavuori)
55. Solo 1500 (Scot)	113. Reloader 12 (Alliant)	171. 50 BMG (Hodgdon)
56. True Blue (Ramshot)	114. 4895 (IMR)	172. AR2218 (ADI)
57. N350 (Vihtavuori)	115. Brig 4065 (Scot)	173. 20N29 (Vihtavuori)
58. 3N38 (Vihtavuori)	116. N135 (Vihtavuori)	

SLOWEST >>

Smokeless Powder Types and Burn Rates

There are many different smokeless powders available in a wide variety of burning rates. Powders are available in two types of composition; Single base and Double base. Single base powders are made from a straight nitro-cellulose composition. Double base powders contain both nitro-cellulose and a percentage of nitroglycerin. Powders most commonly used by the reloader are available in three types.



1. Extruded or Tubular

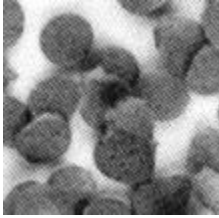
This type of powder is most commonly used in rifle cartridges, and is usually single base. However, there are a few which are double base. Burning rate is controlled by composition, grain diameter and length, web thickness, and deterrent coating. Extruded powder can vary greatly in appearance and grain size.



2. Spherical or Ball Powder

Spherical powder can look like tiny round balls or the grains can be flattened. The grains can vary in size, shape, and color. The burning rate of spherical powders can range from a fast pistol powder to very slow rifle powder. All spherical powder is double base and burning rate is determined by chemical composition, grain size, and deterrent coating. Spherical powder, in general, is harder to ignite than extruded powder, therefore magnum primers are recommended in certain loads.

3. Flake



This type of powder is usually double base fast burning, suitable for pistol, shotgun, and light sub-velocity loads in rifles. Flake powders in slower burning rates suitable for rifles are not available in this country, but have been used in Europe.

The links below will open a new window with the corresponding powder manufacturers in **bold**.

Accurate Arms

[ADI](#)

[Alliant](#)

[Hodgdon](#)

[IMR](#)

[Norma](#)

Ramshot

[Scot](#)

[Vectan](#)

[Vihtavuori](#)

[Winchester](#)