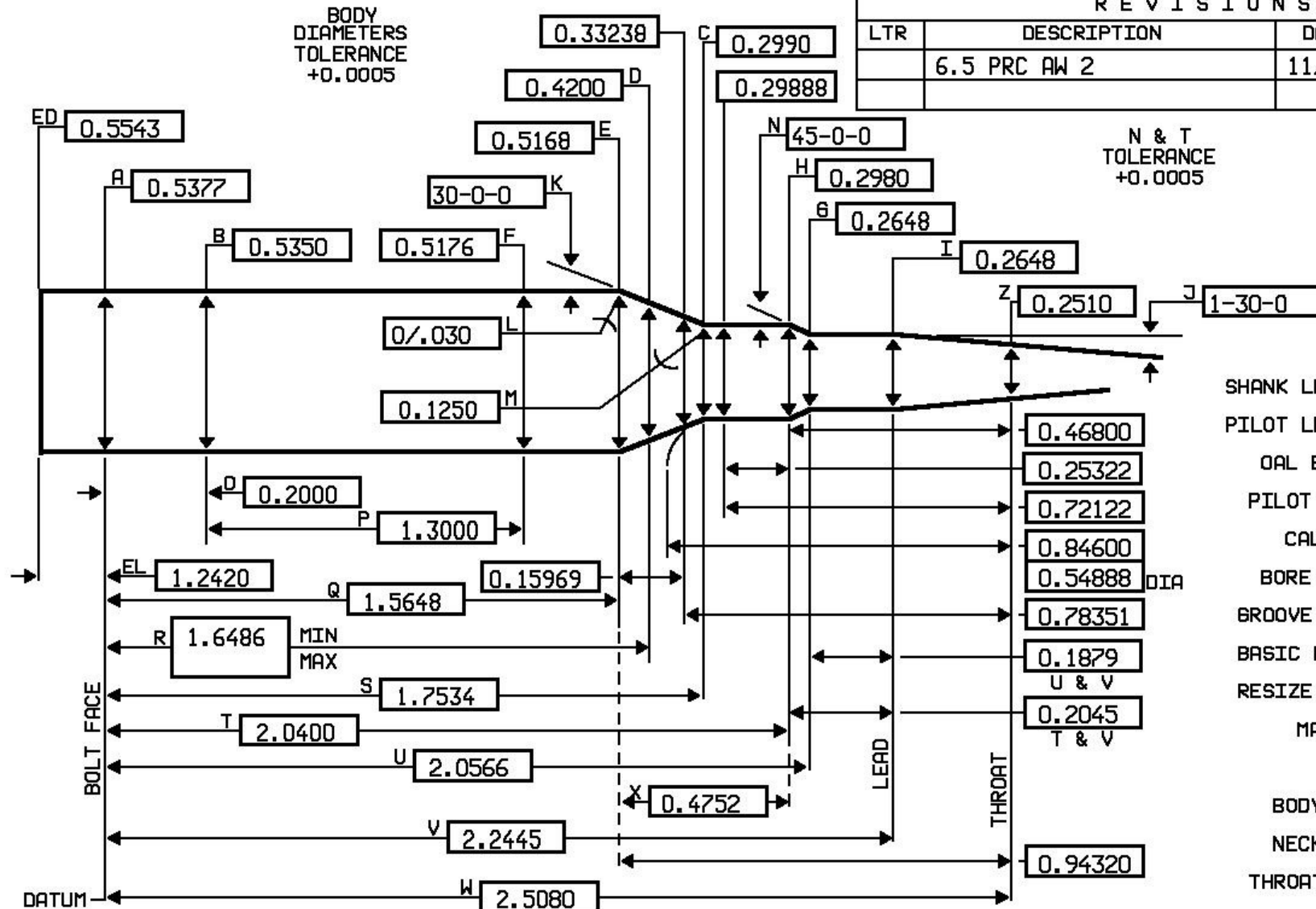


## 6.5 PRC AW 2

BODY  
DIAMETERS  
TOLERANCE  
+0.0005

## R E V I S I O N S

LTR	DESCRIPTION	DATE	APPROVED
	6.5 PRC AW 2	11/24/20	NM

N & T  
TOLERANCE  
+0.0005ANGLE  
TOLERANCE  
±15 MIN

SHANK LENGTH	1.7500
PILOT LENGTH	0.0000
OAL BLANK	5.5000
PILOT SIZE	0.2556
CALIBER	6.5
BORE SIZE	0.2560
GROOVE SIZE	0.2640
BASIC BRASS	6.5 PRC
RESIZE N.D.	0.2860
MARGIN	
TPI in 20 INCHES	
BODY TPI	0.13356
NECK TPI	0.03489
THROAT TPI	0.52372

DESIGNER

NAME Alex Wheeler

PHONE ( )

LENGTHS  
TOLERANCE  
+0.0050JGS  
COOS BAY, OR USA  
97420SIZE  
A

DWN.

DATE 11/24/20

RIMLESS OR REBATED RIFLE  
MINIMUM CHAMBER

SCALE NONE

PRINT # 6.5 PRC AW 2

COMMENT: Throat datum .262 X 2.298 from bolt face.

Use standard 6.5 PRC(2145) headspace gauge. 11/24/20: Alex Wheeler released print to the public.