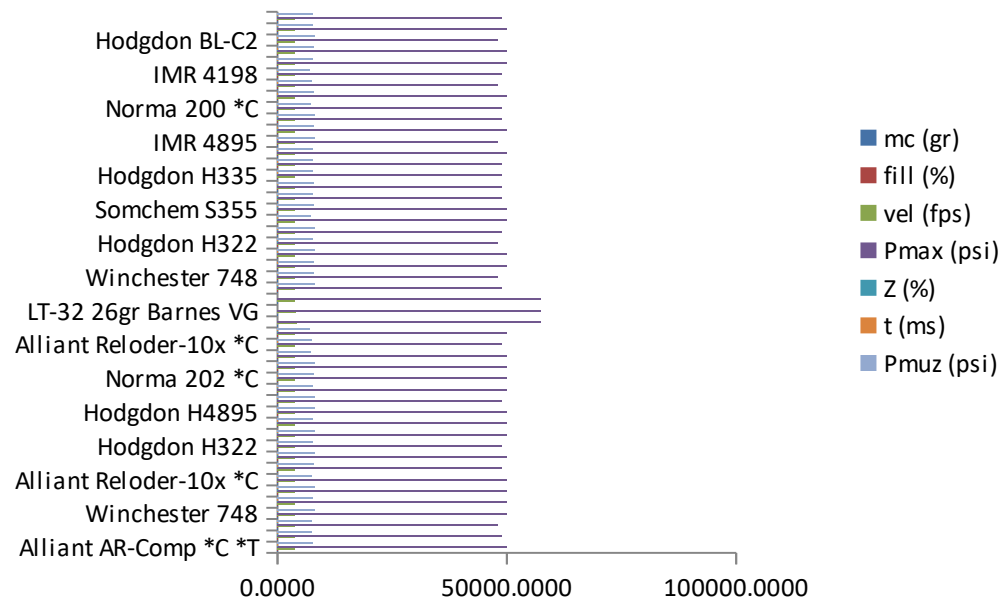


## QuickLOAD > Excel Diagram



# 204 Ruger

Bullet : .204, 32, Hornady V-MAX 22004, Friction Proofed

Useable Case Capaci: 29.041 grain H2O = 1.886 cm<sup>3</sup>

Cartridge O.A.L. L6: 2.250 inch = 57.15 mm

Barrel Length : 24.0 inch

Type	mc (gr)	fill (%)	vel (fps)	Pmax (psi)	Pmuz (psi)	Z (%)	t (ms)
Alliant AR-Comp *C *T	26.0514	101	3891	50000	7653	100.0000	0.9035
Alliant AR-Comp *C *T	25.9017	100	3871	49000	7646	100.0000	0.9112
Alliant AR-Comp *C *T	25.7484	99	3850	48000	7639	99.9971	0.9191
Winchester 748	27.7867	96	3840	50000	8082	95.3307	0.9104
Hodgdon H322	25.2651	97	3834	50000	7776	97.8892	0.9050
IMR 4895	27.7767	104	3831	50000	8247	92.5048	0.9191
Alliant Reloder-10x *C	23.9223	95	3822	50000	7539	99.6531	0.9185
Winchester 748	27.6282	96	3817	49000	8042	95.0327	0.9183
Hodgdon BL-C2	28.9144	99	3816	50000	8128	94.1747	0.9213
Hodgdon H322	25.1098	97	3812	49000	7743	97.6791	0.9128
Norma 203B *C	28.1126	105	3811	50000	8117	92.4501	0.9210
SNPE Vectan SP 10	26.0387	91	3809	50000	7812	96.8604	0.9167
Hodgdon H4895	26.9092	101	3809	50000	8045	93.1626	0.9201
IMR 4895	27.6194	103	3808	49000	8200	92.1621	0.9272
Hodgdon H335	26.7272	91	3807	50000	7804	96.9866	0.9147
Norma 202 *C	26.7652	102	3806	50000	7822	97.0502	0.9201
Alliant Reloder-15 *C	27.9459	104	3805	50000	8096	91.5825	0.9211
Norma 200 *C	23.8382	91	3802	50000	7401	99.8816	0.9342
Alliant Reloder-10x *C	23.7664	94	3801	49000	7515	99.5588	0.9264
IMR 4198	22.4561	94	3795	50000	7064	99.9190	0.8954
LT-32 24gr NTX	25.6000		4241	57382			2.245 OAL
LT-32 26gr Barnes VG	24.3000		3974	57498			2.250 OAL
LT-32 32gr V-Max	23.9000		3798	57349			2.250 OAL
Hodgdon BL-C2	28.7617	98	3794	49000	8088	93.8664	0.9292
Winchester 748	27.4625	95	3793	48000	7999	94.7124	0.9267
Vihtavuori N530 *C	26.0611	97	3793	50000	7829	94.1868	0.9145
Hodgdon CFE223 *C	30.2298	104	3789	50000	8124	90.1556	0.9165
Hodgdon H322	24.9516	96	3789	48000	7707	97.4551	0.9208
Norma 203B *C	27.9554	104	3788	49000	8071	92.1084	0.9290
Accurate 2015	24.9700	98	3788	50000	7413	99.3245	0.9273
Somchem S355	28.5395	109	3787	50000	7973	93.1474	0.9274
SNPE Vectan SP 10	25.8763	90	3787	49000	7774	96.6131	0.9247
Hodgdon H4895	26.7493	100	3786	49000	7998	92.8327	0.9281
Hodgdon H335	26.5681	91	3785	49000	7768	96.7448	0.9226
Norma 202 *C	26.6085	101	3784	49000	7787	96.8112	0.9281
Vihtavuori N540 *C	28.0514	104	3784	50000	7789	96.9599	0.9218
IMR 4895	27.4553	103	3784	48000	8150	91.7977	0.9356
Somchem S321	27.6120	96	3783	50000	7878	94.5577	0.9250
Alliant Reloder-15 *C	27.7878	104	3782	49000	8048	91.2287	0.9291
Norma 200 *C	23.6822	90	3780	49000	7382	99.8234	0.9425
Shooters World Precision	27.4616	105	3780	50000	7836	94.3124	0.9282

Alliant Reloder-10x *C	23.6076	93	3779	48000	7490	99.4509	0.9347
IMR 4198	22.2978	93	3774	49000	7042	99.8693	0.9030
IMR 8208 XBR	26.4160	99	3773	50000	7707	94.0583	0.9169
SNPE Vectan SP 9	27.9694	101	3773	50000	7836	92.3184	0.9186
Hodgdon BL-C2	28.6069	98	3771	48000	8046	93.5468	0.9373
Norma 201 *C	26.7093	102	3770	50000	7801	94.2132	0.9327
Vihtavuori N530 *C	25.9063	96	3770	49000	7786	93.8787	0.9226
Alliant Reloder-12	26.3226	96	3770	50000	7462	97.9217	0.9153
Accurate 2015	24.8156	97	3766	49000	7390	99.1989	0.9354
Hodgdon CFE223 *C	30.0670	103	3765	49000	8074	89.7567	0.9247
Norma 203B *C	27.7947	104	3764	48000	8023	91.7525	0.9373
Somchem S355	28.3856	108	3764	49000	7931	92.8214	0.9355
Hodgdon H4895	26.5859	99	3762	48000	7950	92.4888	0.9365
Vihtavuori N540 *C	27.8927	103	3762	49000	7753	96.7180	0.9297
Hodgdon H335	26.4061	90	3762	48000	7730	96.4894	0.9307
Norma 202 *C	26.4485	100	3762	48000	7751	96.5579	0.9364
Somchem S321	27.4534	95	3760	49000	7836	94.2574	0.9330
Alliant Reloder-15 *C	27.6217	103	3758	48000	7997	90.8505	0.9376
Shooters World Precision	27.3056	105	3757	49000	7795	94.0085	0.9364
Shooters World AR Plus	26.7562	93	3754	50000	7574	95.2299	0.9309
IMR 4198	22.1364	92	3753	48000	7019	99.8063	0.9108
IMR 8208 XBR	26.2535	98	3750	49000	7663	93.7458	0.9248
SNPE Vectan SP 9	27.8079	101	3750	49000	7790	91.9778	0.9266
Alliant Reloder-12	26.1610	96	3748	49000	7431	97.7150	0.9231
Norma 201 *C	26.5535	101	3747	49000	7759	93.9088	0.9410
Vihtavuori N530 *C	25.7481	96	3747	48000	7740	93.5569	0.9308
Somchem S341	28.6478	99	3746	50000	7622	92.1885	0.9195
Hodgdon VARGET *T	27.4575	106	3745	50000	7660	91.1360	0.9148
Accurate 2015	24.6582	96	3744	48000	7365	99.0598	0.9437
Vihtavuori N130 *C	24.2476	97	3743	50000	7051	99.5608	0.9186
Vihtavuori N133 *C	25.2135	103	3743	50000	7083	99.0728	0.9137
Vihtavuori N120 *C	22.3866	92	3741	50000	6516	100.0000	0.9133
Hodgdon CFE223 *C	29.9015	102	3741	48000	8022	89.3444	0.9331
Vihtavuori N540 *C	27.7306	102	3740	48000	7716	96.4622	0.9380
Somchem S321	27.2910	95	3737	48000	7793	93.9425	0.9413
Accurate 2230	27.2510	94	3736	50000	7536	93.3514	0.9296
Shooters World Precision	27.1460	104	3734	48000	7753	93.6903	0.9448
Shooters World AR Plus	26.6049	93	3732	49000	7539	94.9488	0.9390
Hodgdon Benchmark	25.5850	97	3730	50000	7390	94.8576	0.9191
IMR 8208 XBR	26.0875	97	3727	48000	7617	93.4193	0.9331
SNPE Vectan SP 9	27.6396	100	3726	48000	7741	91.6165	0.9348
Alliant Reloder-12	25.9962	95	3726	48000	7397	97.4945	0.9312
Norma 201 *C	26.3943	101	3724	48000	7716	93.5904	0.9496
Somchem S341	28.4892	99	3724	49000	7580	91.8464	0.9275
Somchem S335	26.4005	101	3723	50000	7255	97.8482	0.9309
Vihtavuori N130 *C	24.0881	96	3722	49000	7027	99.4577	0.9265
Vihtavuori N133 *C	25.0544	102	3722	49000	7058	98.9282	0.9215
Hodgdon VARGET *T	27.2968	105	3722	49000	7612	90.7827	0.9227

Vihtavuori N120 *C	22.2295	91	3722	49000	6499	100.0000	0.9210
Accurate 2200	26.5526	98	3720	50000	7511	89.7625	0.9186
Ramshot X-Terminator *C	27.1999	95	3719	50000	7500	92.0999	0.9254
Shooters World Tactical Rifle	26.2543	92	3719	50000	7353	93.4960	0.9206
Shooters World Tactical Rifle	26.2543	92	3719	50000	7353	93.4960	0.9206
Accurate 2230	27.1003	94	3714	49000	7498	93.0371	0.9379
Shooters World AR Plus	26.4501	92	3710	48000	7501	94.6538	0.9475
Hodgdon Benchmark	25.4186	96	3707	49000	7348	94.5637	0.9271
Ramshot TAC *C	28.1437	97	3706	50000	7559	88.4772	0.9266
Vihtavuori N120 *C	22.0694	90	3703	48000	6482	100.0000	0.9289
Somchem S335	26.2388	100	3702	49000	7225	97.6425	0.9392
Vihtavuori N130 *C	23.9255	96	3701	48000	7003	99.3415	0.9347
Somchem S341	28.3263	98	3701	48000	7536	91.4888	0.9356
Vihtavuori N133 *C	24.8922	102	3701	48000	7032	98.7702	0.9295
Hodgdon VARGET *T	27.1328	105	3699	48000	7563	90.4161	0.9308
Accurate 2200	26.3949	97	3697	49000	7462	89.3981	0.9266
Shooters World Tactical Rifle	26.0974	92	3696	49000	7312	93.1814	0.9286
Shooters World Tactical Rifle	26.0974	92	3696	49000	7312	93.1814	0.9286
Ramshot X-Terminator *C	27.0338	95	3696	49000	7454	91.7601	0.9335
Accurate 2230	26.9460	93	3691	48000	7457	92.7086	0.9462
Hodgdon Benchmark	25.2490	96	3684	48000	7303	94.2563	0.9355
Ramshot TAC *C	27.9732	97	3683	49000	7507	88.0862	0.9348
Somchem S335	26.0737	100	3680	48000	7193	97.4231	0.9476
Accurate 2200	26.2337	97	3674	48000	7412	89.0205	0.9348
Shooters World Tactical Rifle	25.9371	91	3673	48000	7269	92.8532	0.9369
Shooters World Tactical Rifle	25.9371	91	3673	48000	7269	92.8532	0.9369
Ramshot X-Terminator *C	26.8641	94	3673	48000	7407	91.4065	0.9418
Ramshot TAC *C	27.8051	96	3659	48000	7455	87.6958	0.9432





